

# UNIT 1/49 Burgess Street, Bicheno 7215, TAS \$175 per night for min 3 nights

Unit Rent ID: 634505

POA bond



## Shirley Court - Central 2 Bedroom

A centrally located two bedroom unit with all the facilities. Close vicinity to the beaches and town facilities. Ideal Bicheno Holiday base to experience East Coast Tasmania.

Bedroom one has a Queen bed and bedroom two has 2 single

plus single trundle. An open plan dining and lounge. Private garden and outdoor area.

Extra: Dishwasher, Washing Machine & Dryer, Full Bath & separate Shower Recess, BBQ, Off Street Parking

Linen and Towels all supplied at the property.

sleeping up to four people at:

Peak Rate: 20th December to 31st January

\$1,100.00 per week

\$175.00 per night for min 3 nights,

Mid Season Rate: 1st February to 30th April and 1st November to 19th December

\$950.00 per week

\$165.00 per night for a min 3 nights stay

Winter Rate\* 1st May to 31st October

\$750.00 per week

\$140.00 per night for min 3 nights,

**Date Available**  
now

**Inspections**  
Inspections are by  
appointment only

**Julie Robinson**

Phone: (03) 6375 1400

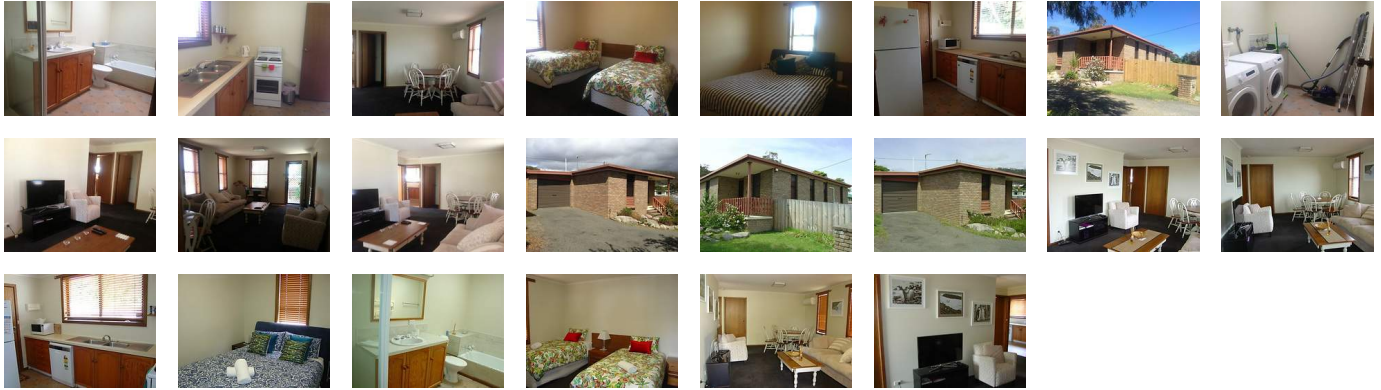
reception.bicheno@ljh.com.au

This page is linked to the Airbnb booking page. If you wish to make bookings without booking fees please view the Airbnb calendar for availability and email or call L.J.Hooker, Bicheno on

# UNIT 1/49 Burgess Street, Bicheno 7215, TAS \$135 per night for min 3 nights

Unit Rent ID: 634505

POA bond



Property details continued from page 1:

... reception.bicheno@ljh.com.au or 03 63751400 during office hours - 9 am to 5 pm weekdays only.

We require 20% of total rental or one night's accommodation to be paid (whichever is the greater amount) to secure booking within 7 days. On cancellation of booking, this amount is not refundable.

Note: Any incidentals will be charge on check out and a 2% surcharge would be applied for credit card.

## The space

Shirley Court is central Bicheno and is a great base for your East Coast adventures. Fully enclosed yard area for the kids or for you to sit and enjoy the the relaxing ambiance of Shirley Court. Central to all tourist attractions Bicheno and the East Coast of Tasmania have to offer.

Restaurants and cafes, shopping center.

Walks and lookouts

Glass Bottom Boat

Penguin tours nightly

Tasmanian Devil tours - December to May nightly

Freycinet National Park

Douglas Apsley National Park

Bay of Fires National Park

## Guest access

Guests have access to all of the unit and the enclosed garden areas. There is also a garage area large enough to park a small car. There are 3 units on the block with Shirley Court - 1/49 Burgess St, Bicheno being the front unit.

## Other things to note

All we ask is that you leave the house in a clean and tidy condition upon your departure. Please do not leave washing up or dishwasher full and place all rubbish and recycling in the outside bins provided. Please turn off all electric heaters and all lights and leave the BBQ clean upon your departure. Thank you

- Licenced for a max of 4 persons (including children)

- No internet services at the property, Free Wi-Fi is available at Bicheno Township.

Please contact us if you have noticed items not working correctly or if any member of your group has accidentally damaged or broken an item at the cottage during your stay. Please contact us on either 63751400 (office hours) or Ely 0409 505 705 (after hours and weekends).

Enjoy your stay

Licence number

DA 2014 / 00195