

609/31-37 Hassall Street, Parramatta 2150, NSW \$435

House Rent ID: 4584271

\$1,740 bond



EAST-FACING WITH CITY VIEWS

PLEASE REGISTER YOUR INTEREST USING THE BOOK INSPECTION LINK TO ENSURE YOU DO NOT MISS OUT ON THE UPDATES FOR THIS PROPERTY. THOSE NOT REGISTERED MAY MISS OUT ON A VIEWING OPPORTUNITY
THANK YOU

Date Available
now

Inspections
Inspections are by appointment only

Ray White Parramatta

Phone: (02)98913333

rwparramatta@mail.inspectrealestate.com.au

Situated on level 5 of an architecturally designed video-security block, this two bedroom apartment offers contemporary finishes, a spacious floor plan with sunny aspects and cross ventilation. Within a short stroll to vibrant city night life, railway station, Rivercat ferry, bus interchange hub, newly proposed Light Rail, free city 'Loop' bus, Westfield Shoppingtown, parks, reputable schools, trendy restaurants, cafes, Sydney Water & NSW Police Headquarters and nearby one of the largest urban renewal projects in Australia - Parramatta Square, a World-Class Civic Centre. This property features:

- Near new vertical blinds
- Open plan living/dining with effortless flow to entertainer's terrace balcony with views to Sydney city skyline & Harbour Bridge
- Reverse-cycle air conditioner
- Open plan kitchen with gas cooktops, stone benchtops, breakfast bar & dishwasher
- Fully-tiled main bathroom with spa bathtub
- Generous main bedroom with built-in robe
- 2nd bedroom with access to 2nd balcony
- Internal laundry with clothes dryer

609/31-37 Hassall Street, Parramatta 2150, NSW

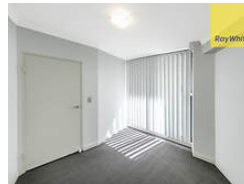
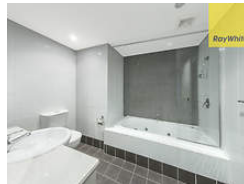
\$435

House Rent ID: 4584271

\$1,740 bond



Why pay for your bond now,
when you can pay it off later?
Visit: www.rent.com.au/rentbond



Property details continued from page 1:

... "Ray White Parramatta/Oatlands/Northmead/Greystanes, its directors, employees and related entities believe that the information contained herein is gathered from sources we deem to be reliable. However, no representation or warranties of any nature whatsoever are given, intended or implied. Any interested parties should rely on their own inquiries."

Airconditioning

Air Conditioning

Area

Balcony

Garage

Secure Parking