

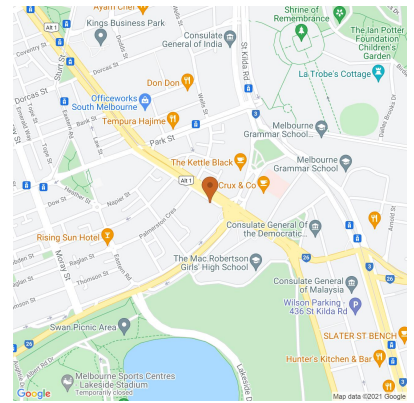
# 501/338 Kings Way, South Melbourne 3205, VIC \$400

Apartment Rent ID: 4583593

POA bond



Why pay for your bond now,  
when you can pay it off later?  
Visit: [www.rent.com.au/rentbond](http://www.rent.com.au/rentbond)



## Inspection for Registered Clients Only

UNFURNISHED - This gorgeous 2 bedroom apartment in the Silverleaf complex is stylishly finished and perfectly located!

Accommodation:

- Modern kitchen features stainless steel appliances and plenty of functional storage space.
- Sparkling bathroom showcases stylish finishes and Euro laundry.

Additional features include building manager, one secure car park plus storage cage, floorboards throughout and central heating and cooling.

Dont miss this unbeatable location, with close proximity to public transport, freeway access and a short stroll to Royal Botanic Gardens, South Melbourne Market, Melbourne CBD and much, much more!

\*Please note this building has an embedded network for one or more utility supplies.  
For further information please speak to your Leasing Executive.

**Date Available**  
now

**Inspections**  
Sun Dec 05, 2021  
11:45am - 12:00pm

**William Chin**  
Mobile: 0481 037 559  
Phone: (03) 9697 8800  
[williamc@micm.com.au](mailto:williamc@micm.com.au)

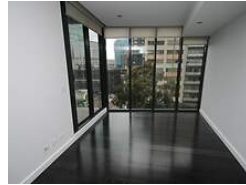
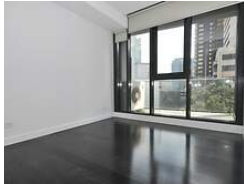
# 501/338 Kings Way, South Melbourne 3205, VIC \$400

Apartment Rent ID: 4583593

POA bond



Why pay for your bond now,  
when you can pay it off later?  
Visit: [www.rent.com.au/rentbond](http://www.rent.com.au/rentbond)



Property details continued from page 1:

**Airconditioning**  
Air Conditioning