

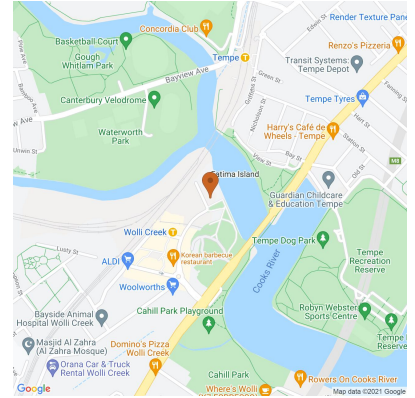
UNIT 1806/2 Chisholm Street, Wollri Creek 2205, NSW DEPOSIT TAKEN !!

Apartment Rent ID: 4574650

POA bond



Why pay for your bond now,
when you can pay it off later?
Visit: www.rent.com.au/rentbond



Luxury top level two-bedroom apartment for lease in Wollri Creek

Welcome to Shore East, a nearly new boutique development in the heart of Wollri Creek. These high quality, over-sized, light filled apartments are perfect for singles, couples & families which has set the new benchmark of Shire living.

Date Available
now

Inspections
Inspections are by appointment only

Jim Jin Lu
Mobile: 0450 031 306
Phone: 0450 031 306
jim.lu@bmggroup.com.au

Location:

Shore East is central to everything you need, incorporating complete functionality & accessibility to excellent facilities and a beautiful coastal lifestyle while offering complete privacy and sophistication. District and water views abound. Floor to ceiling glass surround the living area, affords spectacular views of the CBD skyline.

- Walking distance to Wollri Creek Train Stations
- Restaurants, bars, coffee shops, shopping centres
- Hospitals, schools, medical suites & a thriving business district

Features:

- Light-filled open plan living
- Double size bedrooms all with built in robes

UNIT 1806/2 Chisholm Street, Wollli Creek 2205, NSW

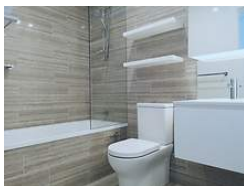
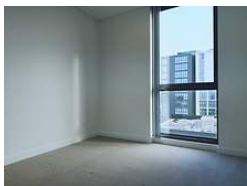
DEPOSIT TAKEN !!

Apartment Rent ID: 4574650

POA bond



Why pay for your bond now,
when you can pay it off later?
Visit: www.rent.com.au/rentbond



Property details continued from page 1:

...

- Ducted air conditioning throughout
- Stylish kitchen featuring polished marble benchtops, splash backs and stainless-steel appliances
- Luxury & affordable gas cooking, heating & hot water
- Open layout flows to covered entertainers balcony, city & district views
- Secure building with lift access for stairless entry, intercom
- fantastic resort style amenities including gym and indoor swimming pool.

Register your interest today as these beautiful apartments will not last!

IF YOU ARE UNABLE TO MAKE AN OPEN HOUSE TIME PLEASE CONTACT JIM ON 0450 031 306 OR CLAY ON 0450 718 838 TO MAKE AN APPOINTMENT TO VIEW.

Property Code: 2231