

103/2 Pearl Street, Erskineville 2043, NSW \$680

Terrace Rent ID: 4570017

POA bond



Spacious modern split level apartment

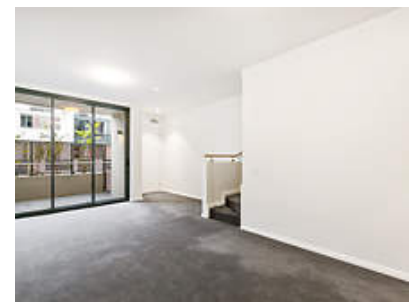
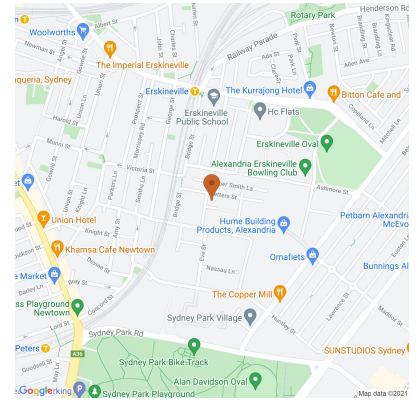
Lifestyle - This modern townhouse set over two floors boasts stylish contemporary interiors and an exceptional sense of light and space provide superior comfort. Simply minutes from the vibrant heart of Newtown, the complex has an open, leafy aspect which lets the sun in but maintains security and privacy, while cafes, shops, parks, schools and transport including rail are available footsteps away.

Accommodation - Generously proportioned and flawlessly presented, immaculately designed and ready to enjoy immediately, it features an open plan living and dining space with an abundance of natural light. There is a brand new designer kitchen with top of the line stainless steel appliances, two generous bedrooms the master complemented with a built-in wardrobe, Master bedroom indulges a private courtyard and a large fully equipped designer bathroom with chic finishes and fittings.

Features - Additional features include secure private street front access, internal laundry, powder room, ducted air-conditioning and soft carpet flooring throughout the property, including an underground security lock up cage with bicycle storage facility. The property is perfectly placed just a short walk from a host of cosmopolitan restaurants, lively bars and Erskineville station.

Date Available
now

Inspections
Thu Oct 21, 2021
03:40pm - 03:55pm



David Behman
Mobile: 0432 808 855
Phone: 02 9557 8883
enquiries.newtown@belleproperty.com

103/2 Pearl Street, Erskineville 2043, NSW \$680

Terrace Rent ID: 4570017

2 1 0

POA bond

Why pay for your bond now,
when you can pay it off later?
Visit: www.rent.com.au/rentbond



Property details continued from page 1:

Airconditioning

Air Conditioning

Security

Alarm System
Intercom