

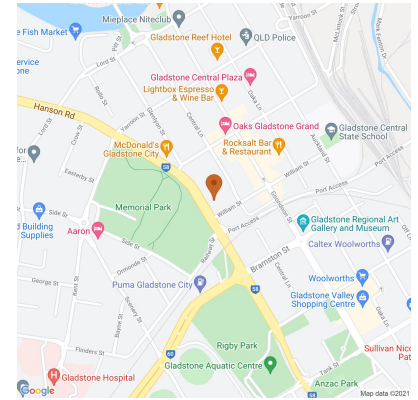
68B Glenlyon Street, Gladstone Central 4680, QLD \$250

Duplex Semi Rent ID: 4540740

\$1,000 bond



Why pay for your bond now,
when you can pay it off later?
Visit: www.rent.com.au/rentbond



DUPLEX IN PERFECT CBD LOCATION

This duplex is conveniently located within walking distance to all the CBD has to offer - the Business District, restaurants and shopping centres, sports fields and the PCYC, schools and takeaway shops. It is also just a few minutes to the Marina and new East Shores development.

Date Available
now

Inspections
Inspections are by appointment only

Samantha Michael
Phone: +61749722800
professionalsgladstone@email.propertym.com

Situated at the rear of the block, this duplex has:

- *2 bedrooms;
- *Open plan living;
- *Functional kitchen;
- *1 bathroom with toilet;
- *Air-conditioning; and
- *Each duplex has 2 carspaces - 1 covered and 1 uncovered.

-BREAK LEASE-

A great property, in a great location at a great price. Please contact Professionals Gladstone to arrange an inspection on 49722800.

68B Glenlyon Street, Gladstone Central 4680, QLD

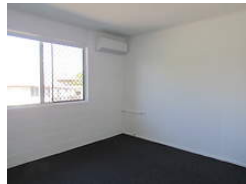
\$250

Duplex Semi Rent ID: 4540740

\$1,000 bond



Why pay for your bond now,
when you can pay it off later?
Visit: www.rent.com.au/rentbond



Property details continued from page 1:

Airconditioning

Air Conditioning