

# 201/20 Llandaff Street, Bondi Junction 2022, NSW

## \$995 PER WEEK

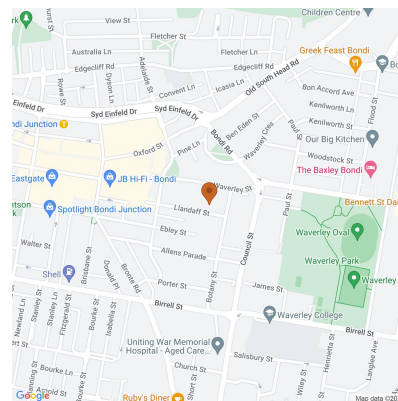
Apartment Rent ID: 4462066

\$3,980 bond



Why pay for your bond now,  
when you can pay it off later?

Visit: [www.rent.com.au/rentbond](http://www.rent.com.au/rentbond)



### Modern 1 Bedroom Apartment

With magnificent finishes and thoughtfully designed living areas and characterised by its striking and distinctive architecture, this home caters for a desirable cosmopolitan lifestyle.

Offering bright and spacious interiors fixed with modern quality finishes, internal laundry and only footsteps to Westfield and public transport. Surrounded by an array of restaurants, cafes and shops that await, where you can unwind above it all.

- Spacious one bedroom apartment
- Sun drenched living area
- Entertainers balcony
- Pet friendly

**Date Available**  
now

**Inspections**  
Inspections are by  
appointment only

**Jaime Carr**  
Mobile: 0413339984  
Phone: 0293621700  
[info@romicmoore.com.au](mailto:info@romicmoore.com.au)

\*Disclaimer: Photos displayed are of a comparable apartment within the same building\*

## 201/20 Llandaff Street, Bondi Junction 2022, NSW

### \$995 PER WEEK

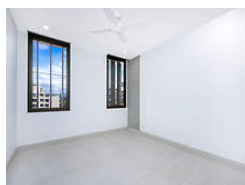
Apartment Rent ID: 4462066

\$3,980 bond



Why pay for your bond now,  
when you can pay it off later?

Visit: [www.rent.com.au/rentbond](http://www.rent.com.au/rentbond)



Property details continued from page 1: