

2202/245 City Road, Southbank 3006, VIC

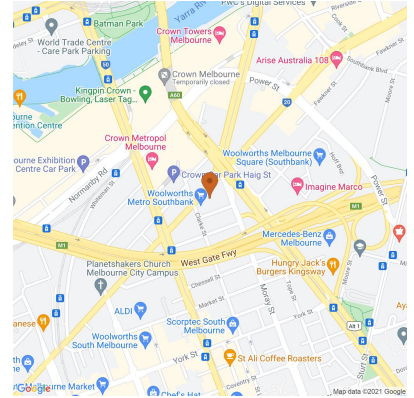
\$570 pw / \$2477 pm

Apartment Rent ID: 4461917



\$2,477 bond

Why pay for your bond now, when you can pay it off later?
Visit: www.rent.com.au/rentbond



Palladium Tower - Modern Lifestyle as rare a Gold

Located in the heart of popular Southbank between South Melbourne Markets and Melbourne City, luxurious apartment living starts here with entering the spacious lobby of the latest 2021 Palladium Tower. High end Port Phillip Bay view facilities on levels 40 and 41 include an infinity pool, spa steam room and gymnasium. Communal facilities of 400 square metres of indoor and outdoor space, Terrace and lounge, landscaped terraces with BBQ facilities, a bar and private dining room complete the picture book contemporary Southbank lifestyle. For your convenience a Woolworths Metro Supermarket is located on the ground-floor of this latest addition to Southbank living Opportunities.

Date Available
now

Inspections
Inspections are by appointment only

Loukas Karas
Mobile: 0409 100 090
Phone: 0409 100 090
ire@salvo.net.au

2202/245 City Road, Southbank 3006, VIC

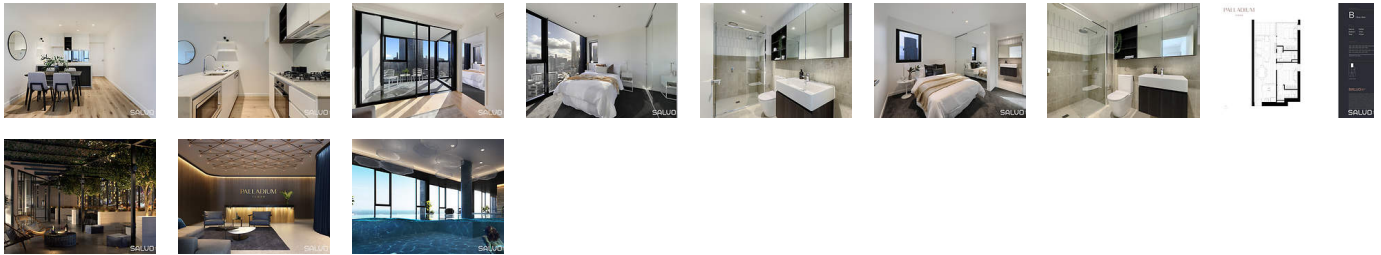
\$570 pw / \$2477 pm

Apartment Rent ID: 4461917

\$2,477 bond



Why pay for your bond now,
when you can pay it off later?
Visit: www.rent.com.au/rentbond



Property details continued from page 1:

Airconditioning

Air Conditioning

Area

Balcony
Outdoor Entertainment

Flooring

Floorboards

Garage

Secure Parking

Internet

Adsl Broadband

Kitchen

Dishwasher

Pool

Above Ground

Rooms

Inside Spa

Security

Intercom

Sport

Gym