

# 5605/148 Ross Street, Glebe 2037, NSW

## More apartments available

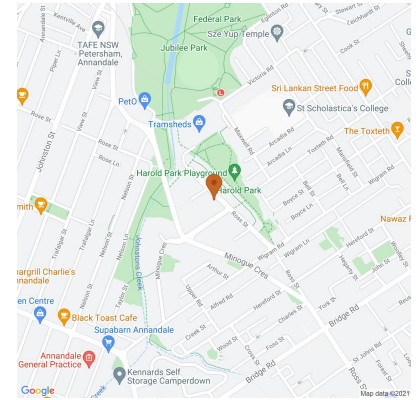
Apartment Rent ID: 4431819



**\$3,000 bond**

Why pay for your bond now,  
when you can pay it off later?

Visit: [www.rent.com.au/rentbond](http://www.rent.com.au/rentbond)



**Deposit taken- More apartments available- Call Harry 0401 545 440**

This 99sqm, 6th floor apartment features:

- Split, well-appointed bedrooms with built-in wardrobes
- Functional living and dining area, ideal for entertaining
- Modern kitchen with stone island benchtop and built-in Miele appliances
- Integrated refrigerator included
- Sleek bathrooms with plenty of vanity storage, bath in ensuite
- North facing balcony, allowing loads of natural light
- Internal laundry with washing machine and dryer included
- Secure car space and storage cage included
- Ducted A/C, video intercom and NBN connectivity
- 450m to the Heritage-listed Tramsheds, light rail and public transport

**Date Available**  
now

**Inspections**  
Inspections are by  
appointment only

**Harry Kinezos**

Phone: 0401 545 440

[harry.kinezos@resbymirvac.com](mailto:harry.kinezos@resbymirvac.com)

For more information please contact Real Estate Services by Mirvac on 02 8588 8888 or email [enquiries@resbymirvac.com](mailto:enquiries@resbymirvac.com) - Your Onsite Agent!

# 5605/148 Ross Street, Glebe 2037, NSW

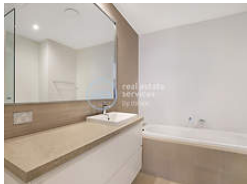
More apartments available

Apartment Rent ID: 4431819

\$3,000 bond



Why pay for your bond now,  
when you can pay it off later?  
Visit: [www.rent.com.au/rentbond](http://www.rent.com.au/rentbond)



Property details continued from page 1:

### Airconditioning

Air Conditioning