

# V803(TOWER 4)/8 Hopkins Street, Footscray 3011, VIC

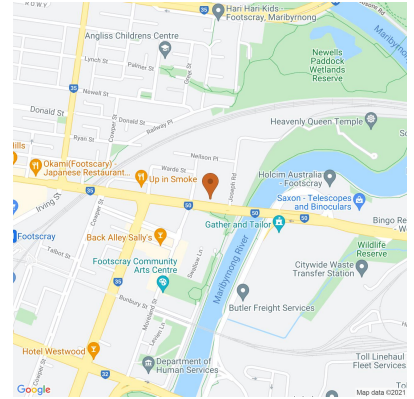
Apartment Rent ID: 4389285

**\$480**

**\$3,000 bond**



Why pay for your bond now, when you can pay it off later?  
Visit: [www.rent.com.au/rentbond](http://www.rent.com.au/rentbond)



## ONE OF THE LARGEST FLOORPLANS IN THE BLOCK WITH GREAT VIEWS!

Prime Residential Property Management is proud to present this brand new, 2 bedroom, 2 bathroom apartment, with views of the Flemington Racecourse and river.

**Date Available**  
now  
**Inspections**  
Inspections are by appointment only

**\*\*PROPERTY IS 83SQ\*\***

Open the door to find the entry leading to the

Open plan kitchen/meals area with gas cooker, oven, dishwasher, and overhead cupboard space.

Fridge is also included and inbuilt.

Euro laundry with washer/dryer combo

Spacious lounge room with floating floors, split system, and racecourse views.

Master bedroom with double sliding mirror doors, study desk and/or dressing table and river and racecourse views

Ensuite in the master bedroom

Central sparkling bathroom

Second bedroom with built-in robes.

Also includes parking for one car and storage cage

**\*\*Entry located by Joseph Street\*\***

Victoria Square AMENITIES INCLUDE:

**Bookings Required**  
YOU MUST BOOK AND REGISTER FOR THE INSPECTION - IF YOU'RE NOT REGISTERED OUR AGENCY MAY NOT ATTEND.  
Times subject to change.

**Melissa Hickson**  
Mobile: 0422 071 572  
Phone: 0422 071 572  
[inspections.ire@prpm.com.au](mailto:inspections.ire@prpm.com.au)

# V803(TOWER 4)/8 Hopkins Street, Footscray 3011, VIC

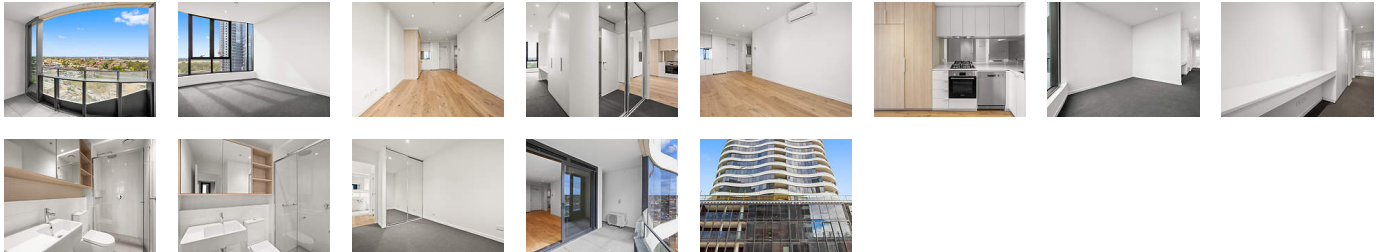
Apartment Rent ID: 4389285

**\$480**

**\$3,000 bond**



Why pay for your bond now, when you can pay it off later?  
Visit: [www.rent.com.au/rentbond](http://www.rent.com.au/rentbond)



Property details continued from page 1:

... A private cinema

An outdoor running track around the entire podium

A heated indoor pool overlooking the city

A state of the art gym

Garden in the sky covering 2,400sqm of lush greenery

Australia's only Olympic-sized aerial outdoor track wraps around the podium of the development, a first for an apartment complex. Become enthralled in Footscray's newest dining destination just a moment from your doorstep with a Melbourne-inspired cafe and restaurant laneway with over 3,000 square metres of bars, supermarkets and diverse cuisines and scents.

With the best views of the Flemington Racecourse and river, this property will not disappoint! Contact our office for an inspection today!

### Airconditioning

Split System

### Garage

Secure Parking

### Heating

Split System

### Kitchen

Dishwasher

### Pool

Pool

### Sport

Gym