

9/265 Guildford Road, Guildford 2161, NSW

Unit Rent ID: 4358018

\$500

\$2,000 bond



Spacious 3 Bedroom Unit

Prime corner positioned unit, located in the heart of Guildford shopping centre. With ultra modern finishes and a spacious layout.

Features include:

- * Large Tiled living area
- * 3 Spacious bedroom with built-in wardrobes
- * Modern kitchen with gas cooking and stainless steel appliances
- * Split system air- conditioning
- * En-suite in Master bedroom
- * Internal laundry with dryer
- * good size balcony for entertaining friends and family
- * Double Tandem Lock up garage in security basement
- * Lift access from basement to unit level

Date Available
now

Inspections
Inspections are by appointment only

Chris Kaltoum
Mobile: 0432 068 804
Phone: 9721 1611
chris.k@nationalre.com.au

9/265 Guildford Road, Guildford 2161, NSW

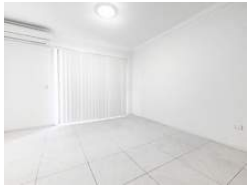
Unit Rent ID: 4358018

\$500

\$2,000 bond



Why pay for your bond now,
when you can pay it off later?
Visit: www.rent.com.au/rentbond



Property details continued from page 1: