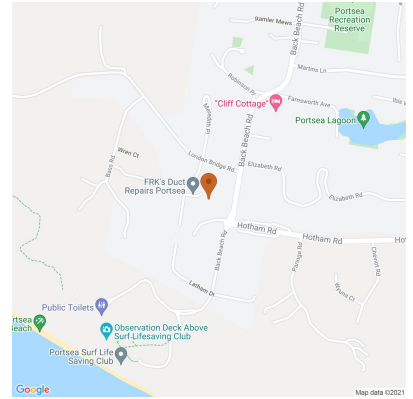


8 Janet Court, Portsea 3944, VIC

House Rent ID: 4351985

\$1,000
\$4,345 bond



Perfect Portsea Positioning!

This stunning weatherboard residence is perfectly nestled in a quiet court location, less than 500m to Portsea Back Beach, and minutes to Portsea Hotel, surf beach and Sorrento shops/cafes.

Boasting expansive open-plan living area, light-filled kitchen and separate second living/home office or 4th bedroom option, the home also features master bedroom with ensuite, two further fitted bedrooms, family bathroom and central laundry. With a spacious showcase deck for entertaining and relaxing, this property also offers paved driveway, undercover parking (1 car) and additional off-street parking, storage, heating and air-conditioning.

Enjoy everything the Mornington Peninsula has to offer.... bay and surf beaches, wineries, restaurants and cafes, golf courses and beautiful nature walks! Long term/12 month lease furnished, available now.

Date Available
now

Inspections
Inspections are by appointment only

Nicole Roberts
Mobile: 0403 458 153
Phone: 03 5984 4500
n.roberts@rtedgarp.com.au

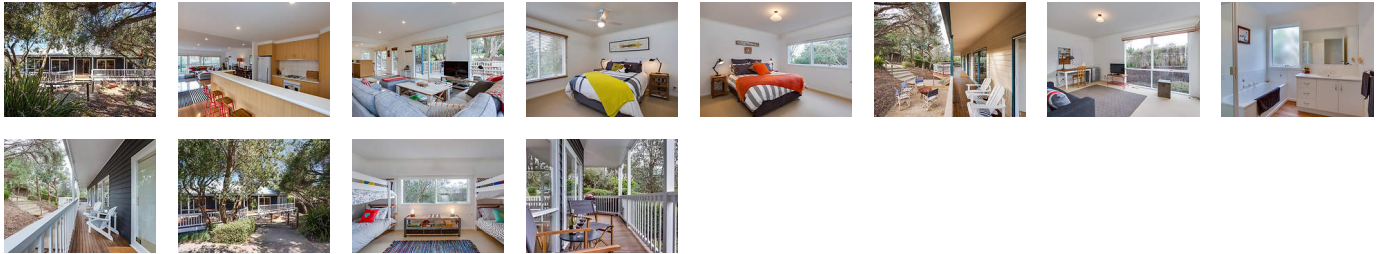
8 Janet Court, Portsea 3944, VIC

House Rent ID: 4351985

\$1,000
\$4,345 bond

4 2 3

Why pay for your bond now,
when you can pay it off later?
Visit: www.rent.com.au/rentbond



Property details continued from page 1: