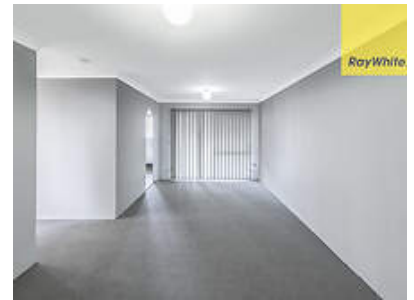
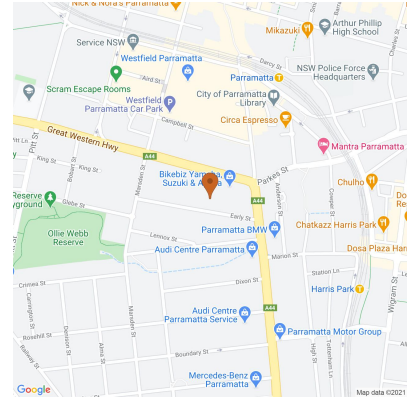


11/34 Early Street, Parramatta 2150, NSW

Unit Rent ID: 4250462

\$350

\$1,400 bond



ITS ALL ABOUT THE LOCATION

PLEASE REGISTER YOUR INTEREST USING THE BOOK INSPECTION LINK TO ENSURE YOU DO NOT MISS OUT ON THE UPDATES FOR THIS PROPERTY. THOSE NOT REGISTERED MAY MISS OUT ON A VIEWING OPPORTUNITY
THANK YOU

Date Available
now

Inspections
Inspections are by appointment only

Ray White Parramatta

Phone: (02) 9891 3333

rwparramatta@mail.inspectrealestate.com.au

Located in a quiet street in the centre of Parramatta this freshly painted and newly carpeted property is just a 5 minute walk to Parramatta Station , Westfield shopping and only a Stroll to parks and nature reserves. Set within the catchment for Parramatta West Public School and with easy access to all amenities this property is certainly one not to miss in your next inspections

Features include:

- Combined lounge and dining
- A good size kitchen offering plenty of storage
- Master bedroom with built-in robes and access to the second balcony
- Good sized bathroom featuring a bath tub
- Internal laundry
- Under cover balcony
- Single lock-up garage

"Ray White Parramatta Group - Parramatta | Oatlands | Northmead | Greystanes, its directors, employees and related entities believe that the information contained herein is gathered from sources we deem to be reliable. However, no representation or warranties of any nature whatsoever are given, intended or implied. Any interested parties should rely on their own inquiries."

11/34 Early Street, Parramatta 2150, NSW

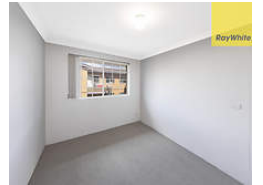
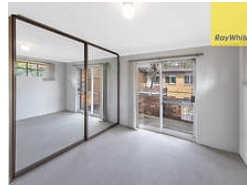
Unit Rent ID: 4250462

\$350

\$1,400 bond



Why pay for your bond now,
when you can pay it off later?
Visit: www.rent.com.au/rentbond



Property details continued from page 1: