

UNIT 104/ 90-92 Pendle Way, Pendle Hill 2145, NSW

\$680 Per Week

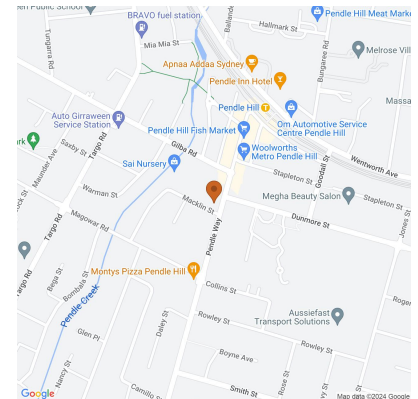
Unit Rent ID: 4240328

POA bond



Why pay for your bond now,
when you can pay it off later?

Visit: www.rent.com.au/rentbond



Spacious Two Bedroom Apartment with Courtyard

Quality apartment for all lifestyles as it is in close vicinity to Pendle Hill shops, Primary and Secondary Schools, Westmead Hospital Precinct and cafes. The well-presented 2-bedroom unit is walking distance to train and bus stations.

Spacious living area with a covered entertainers balcony, tiles and carpet throughout and a sleek stainless-steel kitchen.

The property features:

- Westinghouse Gas cooktop
- Westinghouse Electric built-in oven
- Dishlex dishwasher
- Laundry including a Simpson clothes dryer
- Intercom and secure building access
- Split room air conditioner
- Floor to ceiling tiles in bathroom
- Underground car park and storage cage

Date Available
now

Inspections
Inspections are by
appointment only



Base Management

Mobile: 0466994528

Phone: 0490947009

inspect@baserealty.com.au

UNIT 104/ 90-92 Pendle Way, Pendle Hill 2145, NSW

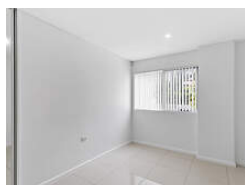
\$680 Per Week

Unit Rent ID: 4240328

POA bond



Why pay for your bond now,
when you can pay it off later?
Visit: www.rent.com.au/rentbond



Property details continued from page 1:

... - Generous living and dining area

- Lavish bedrooms with a built-in wardrobe
- Inclusive ensuite bathroom in master bedroom
- Stair Access
- Separately metered

School Catchments:

- Girraween Public School
- Pendle Hill High School

Don't miss out, enquire and register your interest now!!

For any enquiries, please don't hesitate to contact Base Realty on the details below.

Email: enquiry@baserealty.com.au

Phone: 0466 994 528

PLEASE NOTE PHOTOS ARE INDICATIVES ONLY AND MAY NOT INCLUDE IDENTICAL FINISHES/FIXTURES

Property Code: 621

Garage

Secure Parking