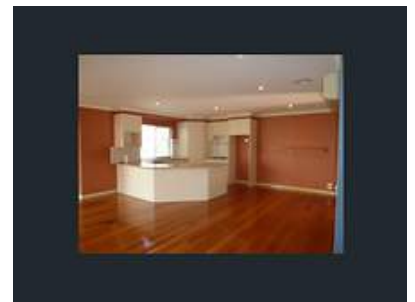
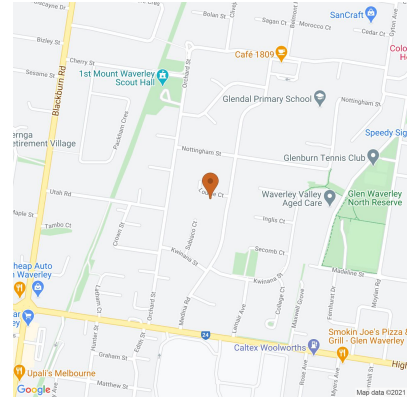


2/12 Louise Court, Glen Waverley 3150, VIC

Townhouse Rent ID: 4193982

\$450

\$1,956 bond



Spacious free standing townhouse with a double garage.

This spacious single level townhouse will impress with a stunning kitchen, huge living room and polished hardwood floors.

Features include:

Two bedroom with built in robes with bathroom access.

Split air conditioning and heating plus ceiling fans.

Big spacious kitchen with gas hot plate, electric oven and a dishwasher and ample storage.

Sisal carpet in the bedrooms, timber venetians, vertical blinds and downlights.

Double garage with auto door and rear roller door.

Terracotta paved courtyard.

Large separate laundry.

To inspect please call Judith on 9686 6088 or 0407745 818

Date Available
now

Inspections
Inspections are by appointment only

Judith Simpson
Mobile: 0407 745 818
Phone: 03 9686 6088
judith@capriproperty.com.au

2/12 Louise Court, Glen Waverley 3150, VIC

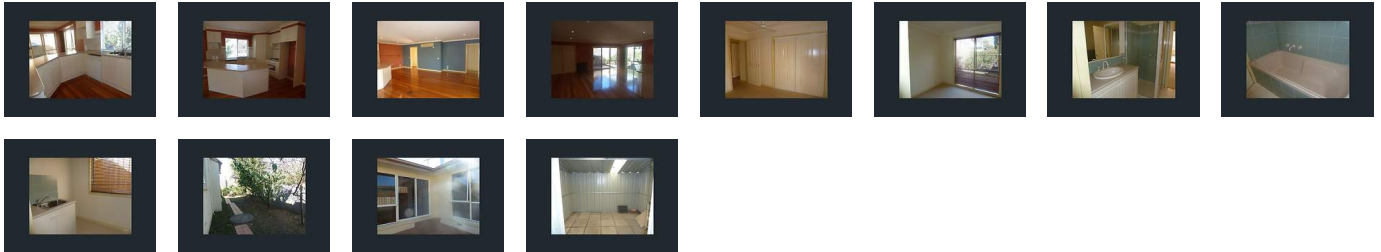
Townhouse Rent ID: 4193982

\$450

\$1,956 bond



Why pay for your bond now,
when you can pay it off later?
Visit: www.rent.com.au/rentbond



Property details continued from page 1:

Kitchen

Dishwasher

Room

Built In Wardrobe

Services

Air Conditioning
Heating