

1006/387 Docklands Drive, Docklands 3008, VIC

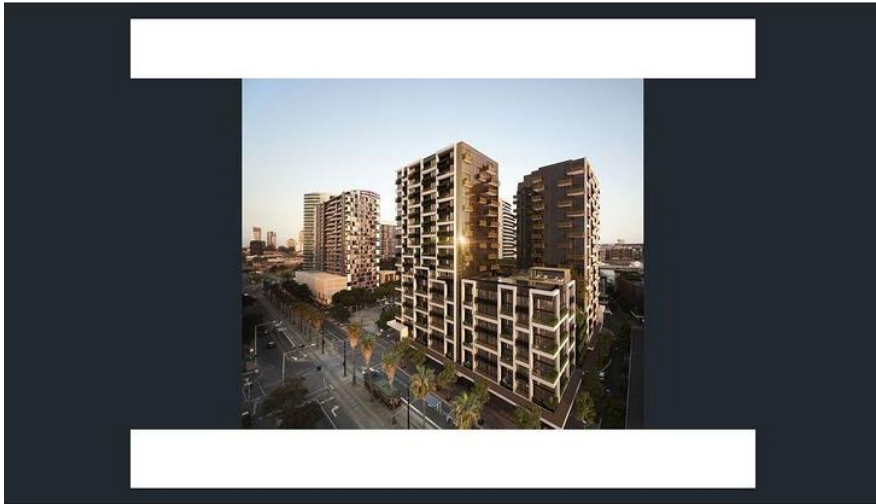
Apartment Rent ID: 4158614

\$550

POA bond



Why pay for your bond now, when you can pay it off later?
Visit: www.rent.com.au/rentbond



Convenient 2 Bedroom 2 Bath Apartment w a Car Park!

Conveniently tucked away from the hustle and bustle of Melbourne yet only minutes to the heart of the city, this is the ultimate Docklands location, Elm & Stone.

Just moments away, you can experience the convenience of modern city living. Enjoy free trams to the city, easy freeway access and a fantastic choice of shops, eateries and entertainment abound at the adjacent District Docklands shopping Complex.

This amazing two bedroom apartment also boasts a slight water view and garden view.

Date Available
now

Inspections
Inspections are by appointment only

Cherry Qiu

Phone: 0396201599
rental@swangco.com

1006/387 Docklands Drive, Docklands 3008, VIC

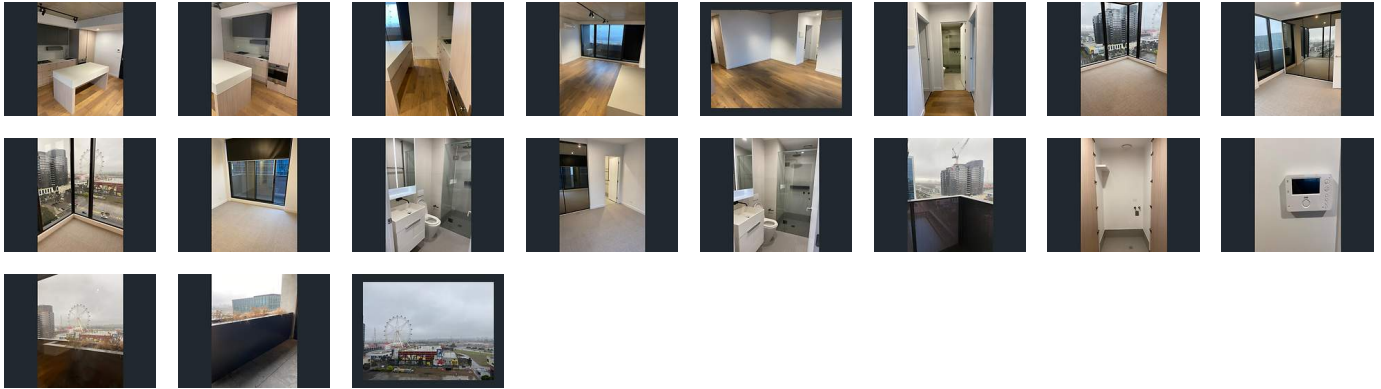
Apartment Rent ID: 4158614

\$550

POA bond



Why pay for your bond now, when you can pay it off later?
Visit: www.rent.com.au/rentbond



Property details continued from page 1:

Room

Built In Wardrobe

Rooms

Balcony

Services

Air Conditioning

Sport

Pool