

## 49 Lambeth Circle, Wellard 6170, WA

Townhouse Rent ID: 4147092

\$480

\$1,920 bond



Why pay for your bond now,  
when you can pay it off later?  
Visit: [www.rent.com.au/rentbond](http://www.rent.com.au/rentbond)



### LUXURY TWO STOREY HOME FOR RENT WELLARD

We welcome to the rental market this beautiful luxury living home with neutral decor throughout in the Wellard Town Centre within walking distance to shops, parks, schools, restaurants and public transport. It would be highly recommended to register early as this property will go fast.

**Date Available**  
now

**Inspections**  
Inspections are by appointment only

**Kathie Winstanley**

Phone: 94394405  
[enquiries@encoreproperty.com.au](mailto:enquiries@encoreproperty.com.au)

#### Property Features Include:

- Master suite with built-in robes and ensuite
- Large Bedrooms all with fitted built in robes
- 3 Separate living spaces
- 2 Bathrooms including ensuite
- Open plan Kitchen, Living & Dining
- Stone benchtops and chef's oven & stainless steel appliances
- Covered paved alfresco paved and overlooking lush artificial lawns and low maintenance gardens
- Laundry with built in storage
- European oak laminate flooring throughout (no carpets)
- Reverse cycle ducted A/C

Six-star energy rated  
NBN enabled

# 49 Lambeth Circle, Wellard 6170, WA

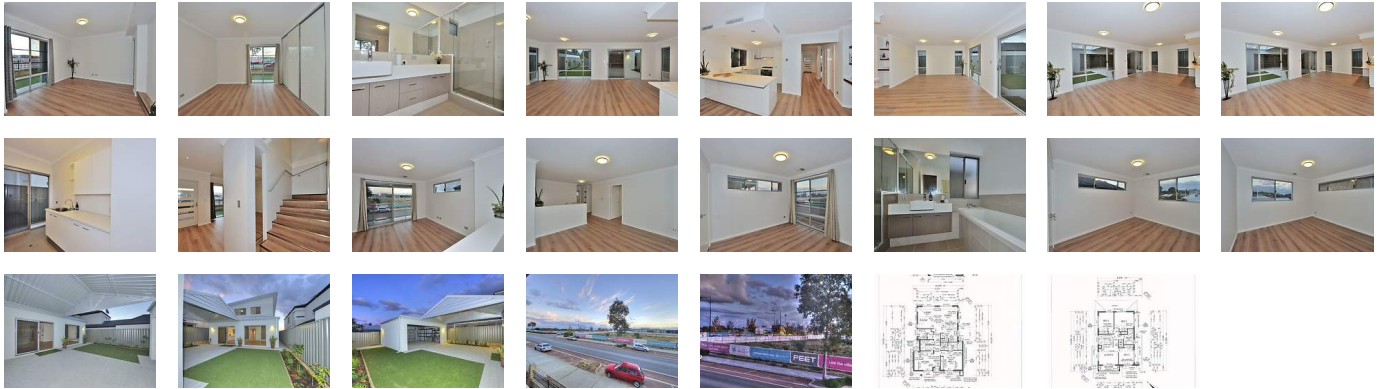
Townhouse Rent ID: 4147092

**\$480**

**\$1,920 bond**



Why pay for your bond now, when you can pay it off later?  
Visit: [www.rent.com.au/rentbond](http://www.rent.com.au/rentbond)



Property details continued from page 1:

... Double Garage / storage with lane access

We could go on and on so be in touch early to view this amazing home that is centrally located and quality living both inside and out.

Please phone Kathie 9439 4405 to arrange a viewing or register your interest online.

Please note we DO NOT ACCEPT 1FORM Applications.

Available from approx 28th November 2020

STRICTLY NO PETS

**Airconditioning**

Air Conditioning

**Area**

Outdoor Entertainment

**Garage**

Remote Garage

Secure Parking