

1408/68 La Trobe Street, Melbourne 3000, VIC

Apartment Rent ID: 4136492

\$450

\$2,250 bond



Why pay for your bond now, when you can pay it off later?
Visit: www.rent.com.au/rentbond



50% OFF FIRST MONTHS RENTAL!

CONCEPT BLUE TOWER 2 BEDROOM, 1 BATHROOM & CAR PARK

With Fantastic Views of the city and close to Q.V. shopping center, RMIT, China Town, Parks & Public Transport at your door.

This 14th Level, UNFURNISHED 2 Bedroom apartment will be a great property to call home.

Spacious open plan living room with West facing floor to ceiling windows alfresco balcony.

Modern kitchen with Smeg stainless steel appliances including gas hot plate, electric oven, dishwasher and microwave. Master bedroom with BIR's Large bath room with shower and separate powder room. Huge Linen storage and Euro Laundry Cabinet.

Other features include, security entry, car parking, Heated indoor pool, gym, sauna, steam room, garden BBQ area & 24 Hour Concierge.

****My Agent Real Estate- COVID-19 Update****

If you are attending a Private Inspection, we request that you adhere to the below regulations:

Date Available
now

Inspections
Wed Jan 27, 2021
01:00pm - 01:10pm

Andrew Gilbee
Mobile: 0412 545 078
Phone: 96337111
andy@myagentre.com.au

1408/68 La Trobe Street, Melbourne 3000, VIC

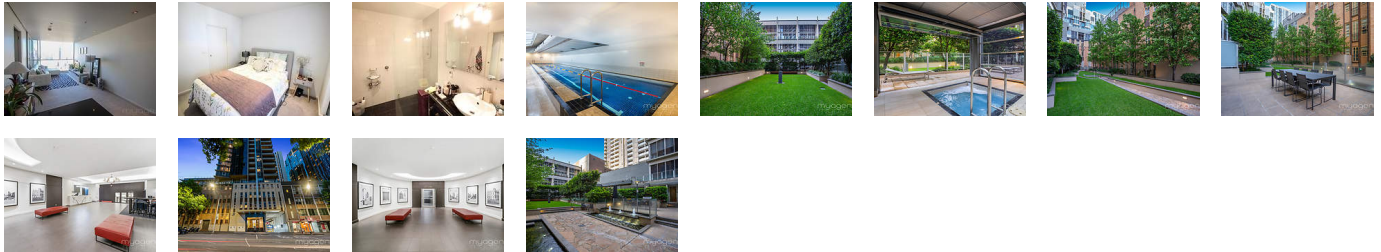
Apartment Rent ID: 4136492

\$450

\$2,250 bond



Why pay for your bond now,
when you can pay it off later?
Visit: www.rent.com.au/rentbond



Property details continued from page 1:

... One agent and one prospective tenant who may be accompanied by one other person from an existing household or an intimate partner and the prospective tenants children under 18 years old

All prospective parties to supply their contact information for contact tracing (where required)

All parties are required to wear a face mask for the duration of the inspection

We ask that all parties sanitise their hands prior to entering the property

Further to this, we request that you do not attend a Private Inspection if:

You have travelled overseas in the last 14 days

Are displaying Flu like symptoms

Have been in contact with anyone who has travelled within the last 14 days or has contracted Coronavirus

For further information on Victoria's restriction levels please visit <https://www.dhhs.vic.gov.au/second-step-restrictions-metropolitan-melbourne-covid-19>

Security

Intercom