

24 Swallow Street, Werribee 3030, VIC

House Rent ID: 3979255



Under Application

\$1,391 bond

Why pay for your bond now,
when you can pay it off later?
Visit: www.rent.com.au/rentbond



LEASED - MORE PROPERTIES WANTED!

AN IMMACULATE HOME READY FOR YOU!

** Register your interest via email - By registering, you will be instantly informed of upcoming inspection times, changes or cancellations for your appointment **

Date Available
now

Inspections
Inspections are by appointment only

Melissa Moran

Mobile: 0412 699 332

Phone: (03) 9370 1588

melissa@maddisonestateagents.com.au

Nestled in the heart of Werribee this spacious three-bedroom family home is just moments away from Pacific Werribee Shopping Centre, Aquapulse, Wyndham Park Community Centre, parklands, Melbourne University Werribee campus and much more. Comprising of three bedrooms, fitted with built in robes, separate and spacious L-shaped lounge room, central bathroom with 2-way access, kitchen with timber cupboards and gas appliances, living / meals area with gorgeous cathedral ceilings and a large backyard offers carport with front and rear roller doors, ample driveway car parking and a lock up garage. Features include ducted heating, wall mounted cooling unit, garden shed, covered pergola, gas hotplates, internal laundry and much more. Be quick on this one!

Applications can be made via 1Form. Rent \$320 per week Bond \$1391 Available now.

24 Swallow Street, Werribee 3030, VIC

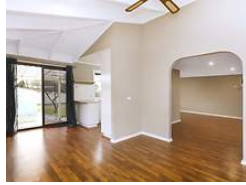
House Rent ID: 3979255

Under Application

\$1,391 bond



Why pay for your bond now, when you can pay it off later?
Visit: www.rent.com.au/rentbond



Property details continued from page 1:

Airconditioning

Air Conditioning

Area

Shed
Outdoor Entertainment

Flooring

Floorboards

Garage

Secure Parking

Heating

Ducted Heating

Security

Fully Fenced