

21/251 Gregory Terrace, Spring Hill 4000, QLD

Apartment Rent ID: 3882930

\$450

POA bond



Why pay for your bond now, when you can pay it off later?
Visit: www.rent.com.au/rentbond



Refurbished and Furnished 2 Bedroom with Views - Multiple styles available.

Ideally located directly opposite Victoria Park, this fully serviced apartment combines a peaceful rear position away from the road with an elevated outlook towards the city. (views vary depending on unit) The generous 2 bedroom / 2 bathroom floor plan offers a very spacious floorplan with a large wraparound, verandah-style balcony providing the perfect spot for alfresco dining while soaking up the city lights.

Well presented throughout, the apartment has a warm and welcoming ambiance and features all of the essentials to create a comfortable inner-city haven. It is currently part of City Park Apartments short term rental pool, making it an attractive proposition for any savvy tenant

An easy walk to restaurants and Centenary Aquatic Centre, this boutique residential building is positioned on the corner of Union Street and promises outstanding Spring Hill convenience.

- 2 bedrooms with built-in wardrobes, master with ensuite
- Quality furnishings
- Flexible lease terms
- Price varies depending on 1 or 2 car park
- Both open to outdoors, bed 2 with its own private balcony
- Immaculate main bathroom with hidden laundry facilities

Date Available
now

Inspections
Inspections are by appointment only

Eadan Hockings
Mobile: 0439 815 195
Phone: 07 3606 8300
eadan.hockings@livinghere.com.au

21/251 Gregory Terrace, Spring Hill 4000, QLD

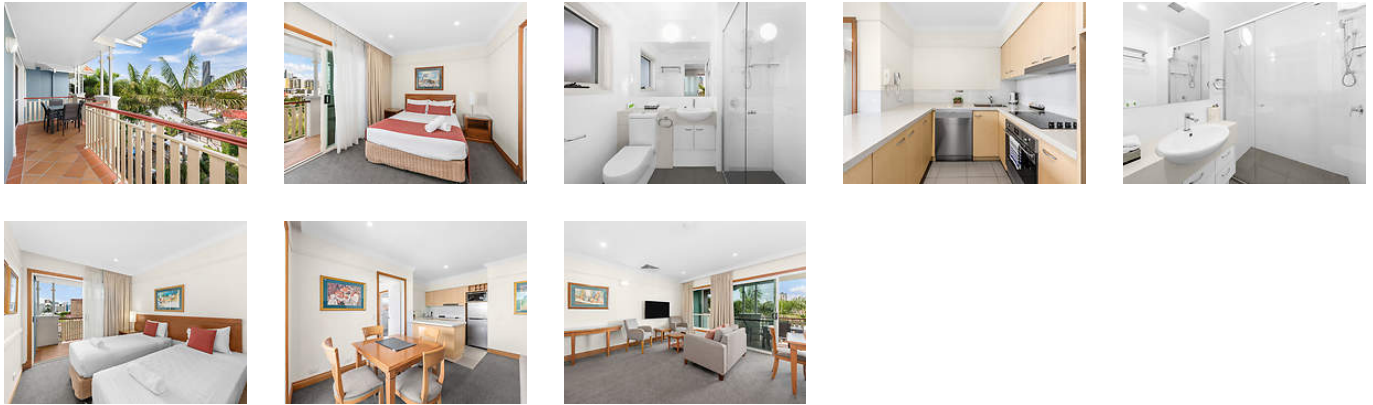
Apartment Rent ID: 3882930

\$450

POA bond



Why pay for your bond now, when you can pay it off later?
Visit: www.rent.com.au/rentbond



Property details continued from page 1:

- Modern-style, open plan kitchen design with a dishwasher
- Light-filled living and dining room opens to the main balcony
- Huge wraparound balcony makes a superb outdoor space
- Ducted a/c, fully furnished with comfortable heritage feel
- On-site management and swimming pool, two lock-up car spaces
- Metres to private schools and hospitals, 1.5km walk to CB

Airconditioning
Air Conditioning

Pool
Pool