

LEVEL 16/267 Castlereagh Street, Sydney 2000, NSW

Apartment Rent ID: 3862947

\$500

\$2,000 bond



Why pay for your bond now,
when you can pay it off later?
Visit: www.rent.com.au/rentbond



Large 2 Bedroom, 2 Bath secured apartment

The apartment:

- Centrally located, walk to Hyde Park, World Square
- Extra large living area, East facing with city and partial Hyde Park view
- All bedrooms with built-ins, master ensuite
- Enclosed and open Balconies,
- Secured Entrance Lobby
- Club facilities: pool, gym (may not be available due to COVID)

An ideal place for the modern city living.

Available NOW!

Contact: Alan Cheung 0413 945 002 / Chris Wong 0433 822 388

*** COVID-19 Health and Safety Measure ***

All viewings are by Registered customers ONLY.

Please text the following details to our team:

Name:

Mobile:

Our team will assign the showing time to you only

Date Available
now

Inspections
Inspections are by
appointment only

Christopher Wong
Mobile: 0433 822 388
Phone: (02) 9211 1128
cwong.chinatown@ljh.com.au

LEVEL 16/267 Castlereagh Street, Sydney 2000, NSW

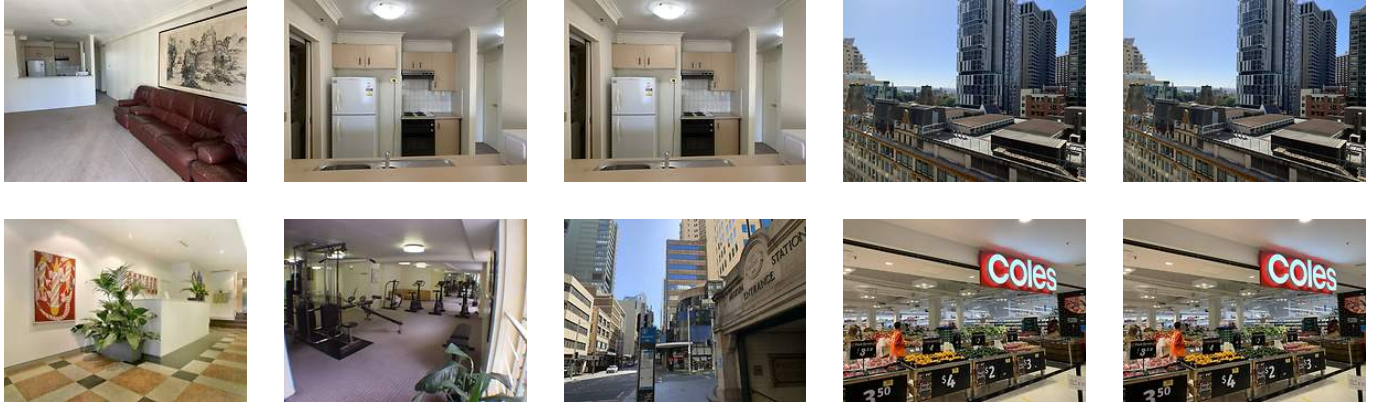
Apartment Rent ID: 3862947

\$500

\$2,000 bond



Why pay for your bond now, when you can pay it off later?
Visit: www.rent.com.au/rentbond



Property details continued from page 1:

... We are strictly practicing Social Distancing, allowing more private space for visitors.

Should you have any special request, please do not hesitate to contact us.

Contact: Alan Cheung 0413 945 002 / Chris Wong 0433 822 388

Pool

Pool