

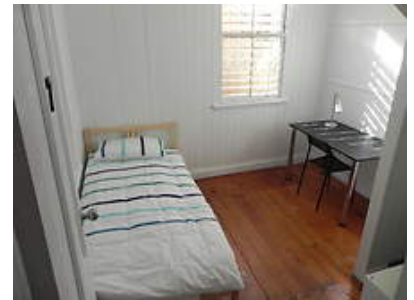
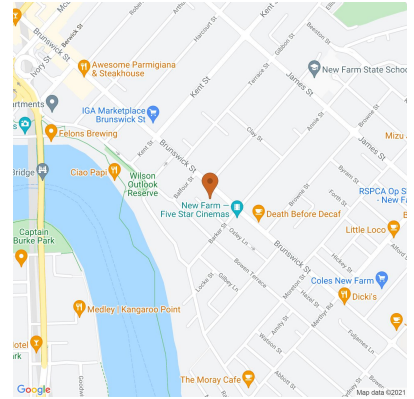
7/661 Brunswick Street, New Farm 4005, QLD

House Rent ID: 3649481

\$155
\$620 bond

1 2 0 Fully furnished

Why pay for your bond now,
when you can pay it off later?
Visit: www.rent.com.au/rentbond



EVERYTHING YOU NEED CLOSE TO FORTITUDE VALLEY

Click "Book Inspection" button now to book your viewing - you MUST register and confirm in order to finalise a viewing time

Date Available
now

Inspections
Inspections are by appointment only

The property is located close to Brisbane City, University's, Colleges, Shopping Centres, Restaurants and bars. Making it super easy to get to your location with public transport at the tip of your fingers.

This two storey house welcomes students & young professionals. With 13 rooms you won't fail to make some long life friends. A fully equip kitchen on each level ensures all your cooking needs are catered for, bathrooms on each level and a large deck for you to relax on during a warm summer afternoons.

Included in your fully furnished lockable room is a bed, desk, chair and wardrobe for all your storage needs. Laundry facilities located on site, coin operated with a washer and dryer provided. The property has off street parking at the rear and spots are first in first serve.

On arrival you will be provided with your own linen pack which includes sheets & pillow cases. On a monthly basis we will arrange collection of your dirty linen and provide a fresh set each month.

Education Facilities Close by:

QUT Kelvin Grove - approx 4.6km (195,196,199, 66, 330, 333, 340 bus)

QUT Gardens Point - approx 4.1km (195, 196,199 bus)

UQ St Lucia - approx 8.6km (196, 184, 185, 210, 212 bus)

Southbank Tafe - approx 5.2km (196,199 bus)

Brisbane Students

Phone: 0731933450

rentals@brisbanestudents.com.au

7/661 Brunswick Street, New Farm 4005, QLD

House Rent ID: 3649481

\$155

\$620 bond



Fully furnished

Why pay for your bond now,
when you can pay it off later?

Visit: www.rent.com.au/rentbond



Property details continued from page 1:

...

Shopping Close by:

New Farm Coles - 650m

Public Transport

Closest bus stop: approx 25m (Route 199)

Closest Train station: approx 1.4km (Fortitude Valley Station)