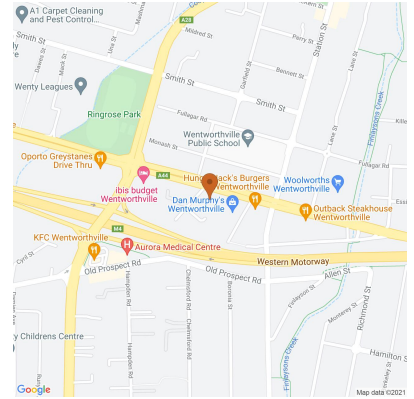


208/357-359 Great Western Highway, Wentworthville, NSW

Apartment Rent ID: 3600729

~~\$400,000~~ Rent Weekly Price, ~~2145~~ Perceived

\$1,600 bond



Stylish, Modern two bedroom Apartment ! - DEPOSIT TAKEN

This bright and sunny two bedroom apartment is ideal for anyone who appreciates modern living.

This two bedroom apartment features:

- Two decent sized bedrooms with built in wardrobes
- Two bathrooms
- En-suite off bedroom
- Modern kitchen with Caesar stone bench tops and loads of storage space
- Air-conditioning
- Downlights throughout
- Over sized balcony, great for entertaining
- Secure basement parking
- Lift access

Conveniently located just a stroll to the train station, Public transport, Shops, parks, Schools and many more amenities.

Book your inspection now !

Date Available
now

Inspections
Inspections are by appointment only

Alexander Abboud
Phone: 9637 8111
rentals@lspg.com.au

208/357-359 Great Western Highway, West Wyalapa NSW

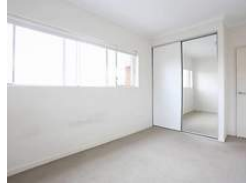
Apartment Rent ID: 3600729

\$400,000 Rent Weekly \$245,000 Received

\$1,600 bond



Why pay for your bond now, when you can pay it off later?
Visit: www.rent.com.au/rentbond



Property details continued from page 1: