

6/17-23 Newland Street, Bondi Junction 2022, NSW \$700

Apartment Rent ID: 3481425

\$2,800 bond



LARGE 1 BEDROOM - CITY LIVING - CLOSE TO EVERYTHING

Please use the property ID code 2848 when phoning. Please do not text.

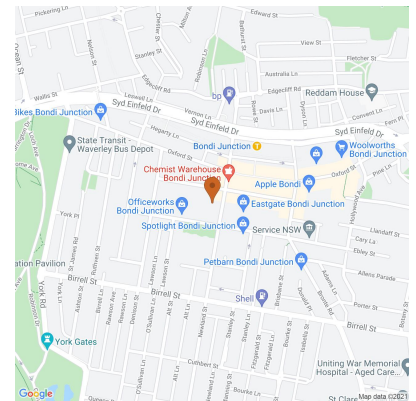
Large 1 Bedroom modern apartment with secure parking and balcony in the heart of Bondi Junction in the prestigious Trevilion building.

Close to transport to the City and beaches, next door to shopping, gyms and lifestyle. Gym and luxury swimming pool in the building. Recently upgraded stove, new dishwasher.

- Secure private Car Space
- Secure building access
- Modern interiors in a very good condition
- Large entertainment balcony
- 100 meters to trains and buses
- Luxury swimming pool and gym
- Fibre optic
- Heating/Cooling reverse cycle
- Storage
- Internal laundry
- Modern kitchen with dishwasher

Date Available
now

Inspections
Inspections are by appointment only



The Manager

SeaScapeRE

Mobile: 0415 326 355
Phone: 0415 326 355
inquiry@allrentals.com.au

SeaScapeRE

SeaScape RE

15 Simbai Street
Runaway Bay, QLD 4216

Phone: 0415314481
inquiry@seascapere.com

To book an inspection please use the RED 'Get in Touch' tab (on a desktop) or RED 'Email' (on an Android, iPhone, or iPad) which will go directly to the person managing the property.

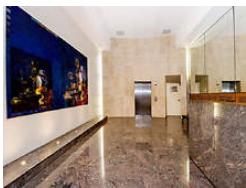
6/17-23 Newland Street, Bondi Junction 2022, NSW \$700

Apartment Rent ID: 3481425

\$2,800 bond



Why pay for your bond now,
when you can pay it off later?
Visit: www.rent.com.au/rentbond



Property details continued from page 1:

Airconditioning

Ducted

Area

Balcony

Flooring

Floorboards

Garage

Secure Parking

Heating

Ducted Heating

Kitchen

Dishwasher

Pool

In Ground

Security

Intercom

Services available

Pay Tv

Sport

Gym